

	DHANALAKSHMI SRINIVASAN COLLEGE OF ARTS AND SCIENCE FOR WOMEN (AUTONOMOUS) (Affiliated to Bharathidasan University, Tiruchirappalli) (Nationally Re-Accredited with 'A' Grade by NAAC) Perambalur – 621212	
NAAC	CRITERIA – I	METRIC 1.4.2

ALUMNAE FEEDBACK ANALYSIS REPORT – 2018 – 2019

The college to achieve student outcomes in terms of knowledge, skills, and attitude developed during course study, alumnae feedback is crucial. In the academic year 2018–2019, the department alumnae coordinator gathered the structured feedback analysis, and the combined alumnae response is shown in Table 1 and Figure 1.

S. NO	COMPONENT	EXCELLENT (%)	VERY GOOD (%)	GOOD (%)	SATISFACTORY (%)	POOR (%)
1	Curriculum is adequate to meet the industry / profession needs	80	10	5	5	0
2	Course curriculum fulfills my expectations	85	5	10	0	0
3	Electives offered are supportive to the core papers	80	5	10	5	0
4	Value education imparted in the institution has influenced my character	75	10	5	10	0
5	Courses included in the curriculum for communication & interpersonal skill development	88	7	5	0	0
6	Opportunity provided by the college for managerial & leadership skill development	88	7	5	0	0
7	Faculty encouragement in students learning process	85	10	5	0	0
8	Institution ambience & infrastructure facilities	80	10	5	5	0
9	Motivation to participate in social service initiatives	85	5	10	0	0
10	Curriculum provided me a base for pursuing higher education / research	90	5	5	0	0
Average Score		83.6	7.4	6.5	2.5	0

Table 1

	DHANALAKSHMI SRINIVASAN COLLEGE OF ARTS AND SCIENCE FOR WOMEN (AUTONOMOUS) (Affiliated to Bharathidasan University, Tiruchirappalli) (Nationally Re-Accredited with 'A' Grade by NAAC) Perambalur – 621212	
NAAC	CRITERIA – I	METRIC 1.4.2

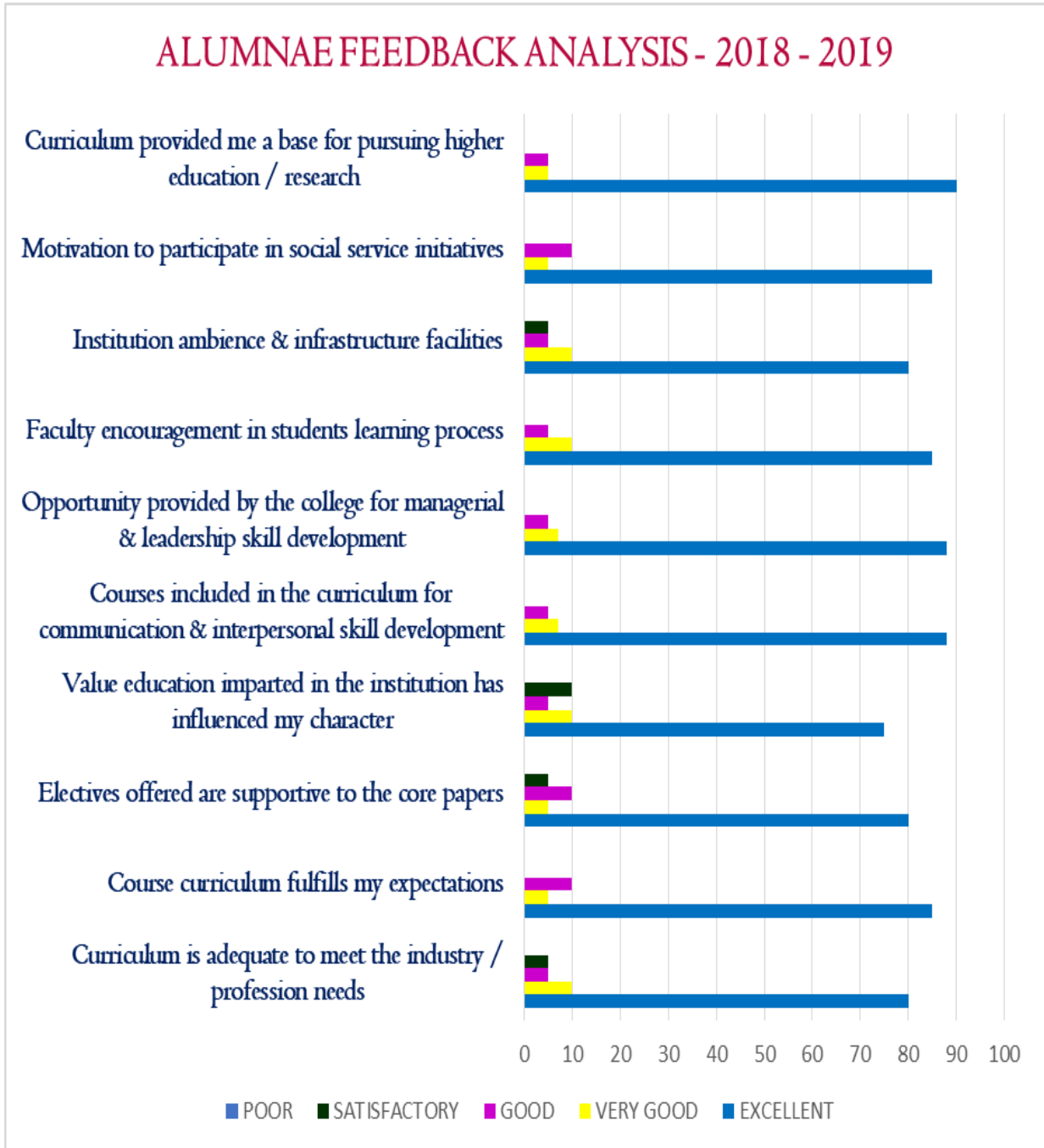


Figure 1

	DHANALAKSHMI SRINIVASAN COLLEGE OF ARTS AND SCIENCE FOR WOMEN (AUTONOMOUS) (Affiliated to Bharathidasan University, Tiruchirappalli) (Nationally Re-Accredited with 'A' Grade by NAAC) Perambalur – 621212	
NAAC	CRITERIA – I	METRIC 1.4.2

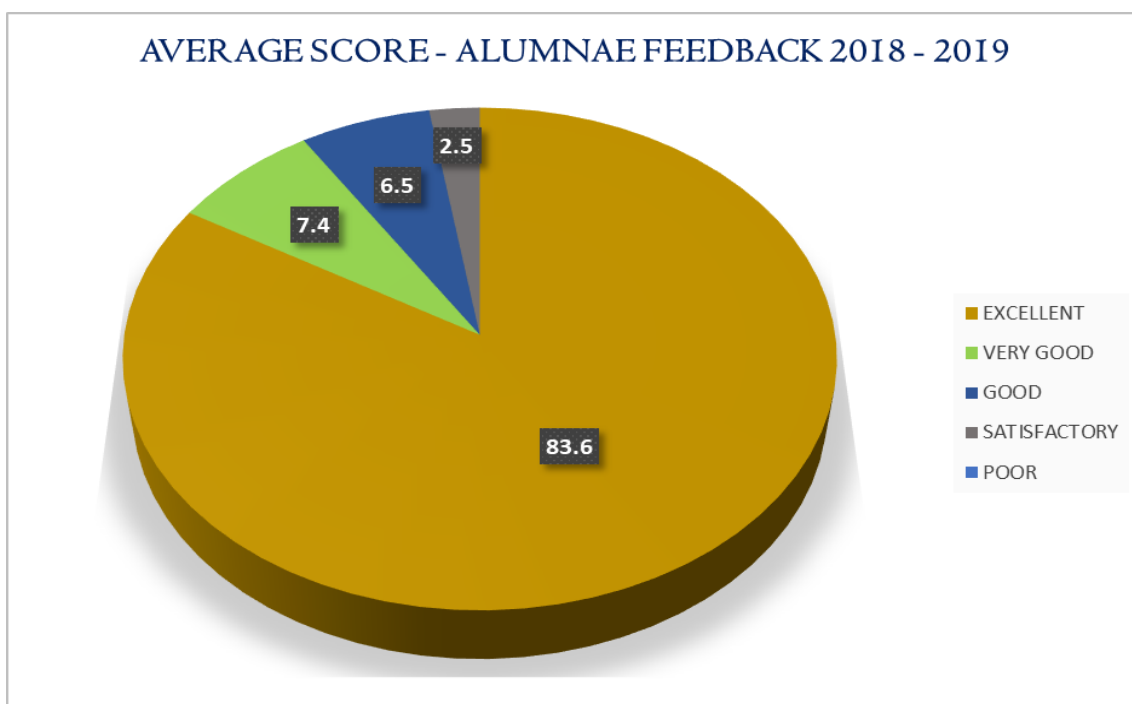


Figure 2

On an average 83.6% alumnae are Excellent 7.4% are Very Good and 6.5 % are Good and 2.5% are satisfactory with the ongoing syllabus, faculty and institution ambience of our college. The same is depicted pictorially in Figure.2

Alumnae Feedback Analysis Report

The recommendations made by the alumnae who are listed below are as follows.

- Conduct surveys during extension events to learn about local needs and find solutions.
- Entrepreneurship is encouraged and entrepreneurial abilities are instilled.
- To eliminate discrimination within the student body and foster an environment where everyone has an equitable chance by holding seminars.
- Students must be encouraged to enroll in more conventional online certificate programmes.

At the departmental level, alumnae feedback is analyzed and notable suggestions are discussed, examined at the institutional level for every program, and required actions are done.

	DHANALAKSHMI SRINIVASAN COLLEGE OF ARTS AND SCIENCE FOR WOMEN (AUTONOMOUS) (Affiliated to Bharathidasan University, Tiruchirappalli) (Nationally Re-Accredited with 'A' Grade by NAAC) Perambalur – 621212	
NAAC	CRITERIA – I	METRIC 1.4.2

Conclusion

Data collection is an important process in any sector which helps to analyze where we are, and by analyzing data resolving the issues helps to become even better. So the institution collects feedback from different stakeholders and their responses will be analyzed to take right action




PRINCIPAL
 DHANALAKSHMI SRINIVASAN COLLEGE
 OF ARTS AND SCIENCE FOR WOMEN
 (AUTONOMOUS),
 PERAMBALUR - 621 212.

	DHANALAKSHMI SRINIVASAN COLLEGE OF ARTS AND SCIENCE FOR WOMEN (AUTONOMOUS) (Affiliated to Bharathidasan University, Tiruchirappalli) (Nationally Re-Accredited with 'A' Grade by NAAC) Perambalur – 621212	
NAAC	CRITERIA – I	METRIC 1.4.2

EMPLOYER FEEDBACK ANALYSIS REPORT – 2018 – 2019

Employer feedback is another crucial factor in successful curriculum design because it indicates how well it meets business needs. Through students who were placed, the placement cell got comments from the employer. From the placement center, all of the employer feedback forms were collected. The responses were compiled into Table.1, which is graphically depicted in Figure.1.

S. NO	COMPONENT	EXCELLENT (%)	VERY GOOD (%)	GOOD (%)	SATISFACTORY (%)	POOR (%)
1	Skill based curriculum	75	10	8	7	0
2	Knowledge based curriculum	75	10	10	5	0
3	Value based curriculum	60	15	15	10	0
4	Employability based curriculum	78	22	0	0	0
5	Language proficiency skills	70	15	10	5	0
6	Managerial & leadership skills	62	18	10	10	0
7	Attitude & adaptability	60	25	15	0	0
8	Overall rating of our institution	60	25	15	0	0
Average Score		67.5	17.5	10.38	4.62	0

Table 1

	<p>DHANALAKSHMI SRINIVASAN COLLEGE OF ARTS AND SCIENCE FOR WOMEN (AUTONOMOUS) (Affiliated to Bharathidasan University, Tiruchirappalli) (Nationally Re-Accredited with 'A' Grade by NAAC) Perambalur – 621212</p>	
NAAC	CRITERIA – I	METRIC 1.4.2

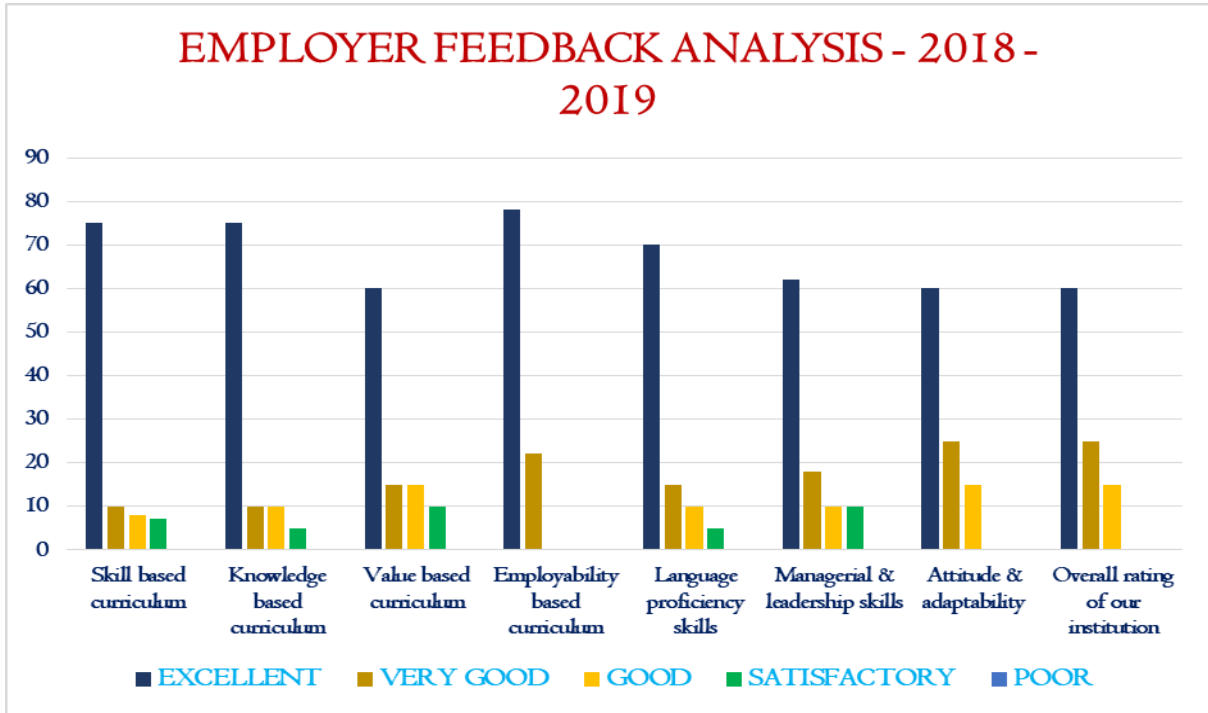


Figure 1

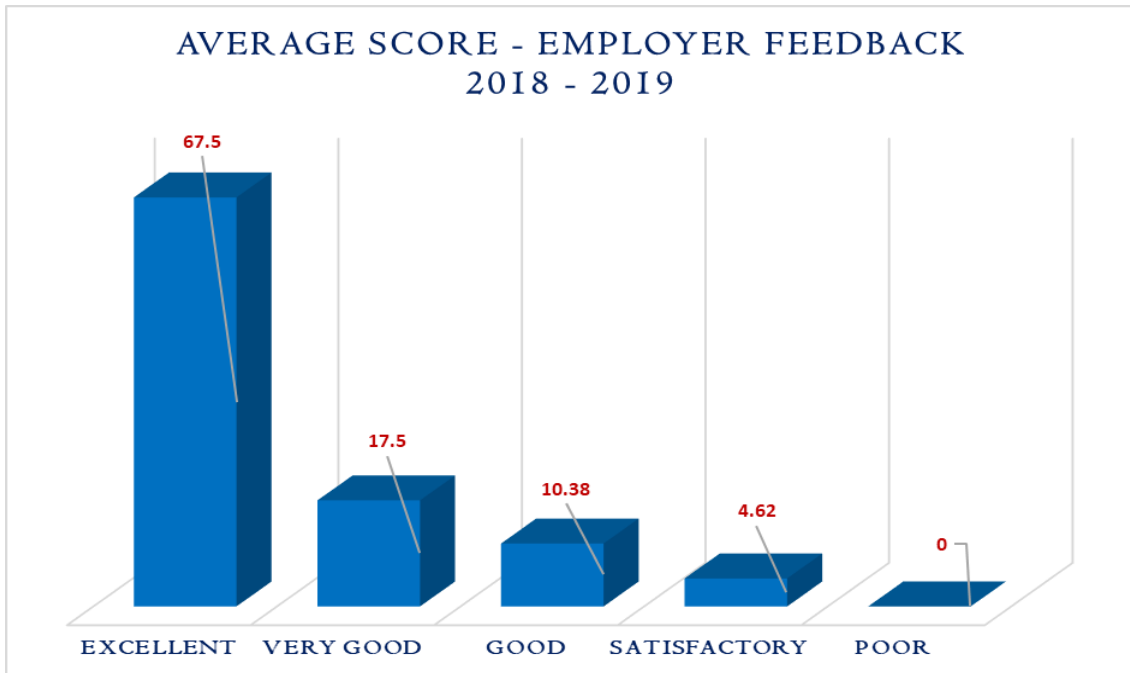


Figure 2

	DHANALAKSHMI SRINIVASAN COLLEGE OF ARTS AND SCIENCE FOR WOMEN (AUTONOMOUS) (Affiliated to Bharathidasan University, Tiruchirappalli) (Nationally Re-Accredited with 'A' Grade by NAAC) Perambalur – 621212	
NAAC	CRITERIA – I	METRIC 1.4.2

On an average 66.75% of them are Excellent, 17.5% are Very Good, 10.38% are Good and 4.62% are Satisfactory with the current prospectus of the programme and the same is represented in Figure 2

Employer Feedback Analysis Report

These are the recommendations made by the employers who are listed below.

- According to recruiters, students have excellent subject-matter knowledge, but their analytical and communication skills need to be developed.
- More online course completions are encouraged among students.
- For some courses, there may be opportunities for industrial collaboration.

At the departmental level, the employer feedback is examined, and subsequent steps are planned. Additionally, the recommendations were examined at the institutional level for every program, and necessary steps were made in the IQAC meeting.

Conclusion

Our college is able to make improvements to the academic environment as a result of the feedback analysis from various stakeholders. This ensures that everyone has access to a world-class education.




PRINCIPAL
 DHANALAKSHMI SRINIVASAN COLLEGE
 OF ARTS AND SCIENCE FOR WOMEN
 (AUTONOMOUS),
 PERAMBALUR - 621 212.

	DHANALAKSHMI SRINIVASAN COLLEGE OF ARTS AND SCIENCE FOR WOMEN (AUTONOMOUS) (Affiliated to Bharathidasan University, Tiruchirappalli) (Nationally Re-Accredited with 'A' Grade by NAAC) Perambalur – 621212	
NAAC	CRITERIA – I	METRIC 1.4.2

FACULTY FEEDBACK ANALYSIS REPORT – 2018 – 2019

Faculty is an important stakeholder for curriculum design, implementation and development. All the teacher feedback forms were collected from various departments and the responses were consolidated their values are shown in Table.1 and the same is represented graphically in Figure.1.

S. NO	COMPONENT	EXCELLENT (%)	VERY GOOD (%)	GOOD (%)	SATISFACTORY (%)	POOR (%)
1	Curriculum is up-to-date, need based & application oriented	85	10	5	0	0
2	Electives offered are supportive to the core papers	80	15	5	0	0
3	Board of studies (BOS) ensures that current trends are included in syllabus with relevance to industry	80	15	5	0	0
4	Course outcomes contributes to the fulfillment of program outcomes	85	5	5	5	0
5	Entrepreneurship courses in our curriculum design focuses students on the launching and running of businesses	45	25	15	15	0
6	OBE attainment of your course / programme	75	10	15	0	0
7	Opportunity to contribute / participate in various committees, FDPs, Conferences and Workshops	70	15	10	5	0
8	Learning opportunities for your career advancement in the institution	85	10	5	0	0
Average Score		75.63	13.13	8.12	3.12	0

Table 1

	<p>DHANALAKSHMI SRINIVASAN COLLEGE OF ARTS AND SCIENCE FOR WOMEN (AUTONOMOUS) (Affiliated to Bharathidasan University, Tiruchirappalli) (Nationally Re-Accredited with 'A' Grade by NAAC) Perambalur – 621212</p>	
NAAC	CRITERIA – I	METRIC 1.4.2

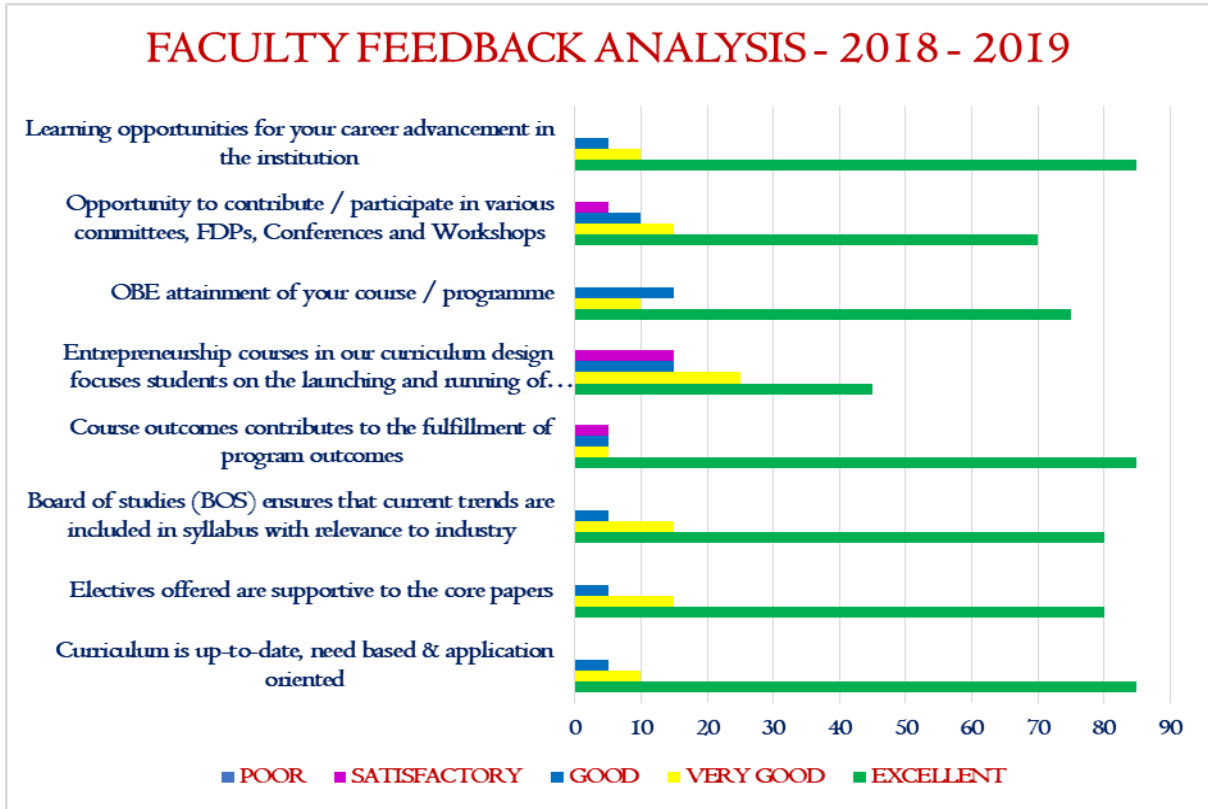


Figure 1

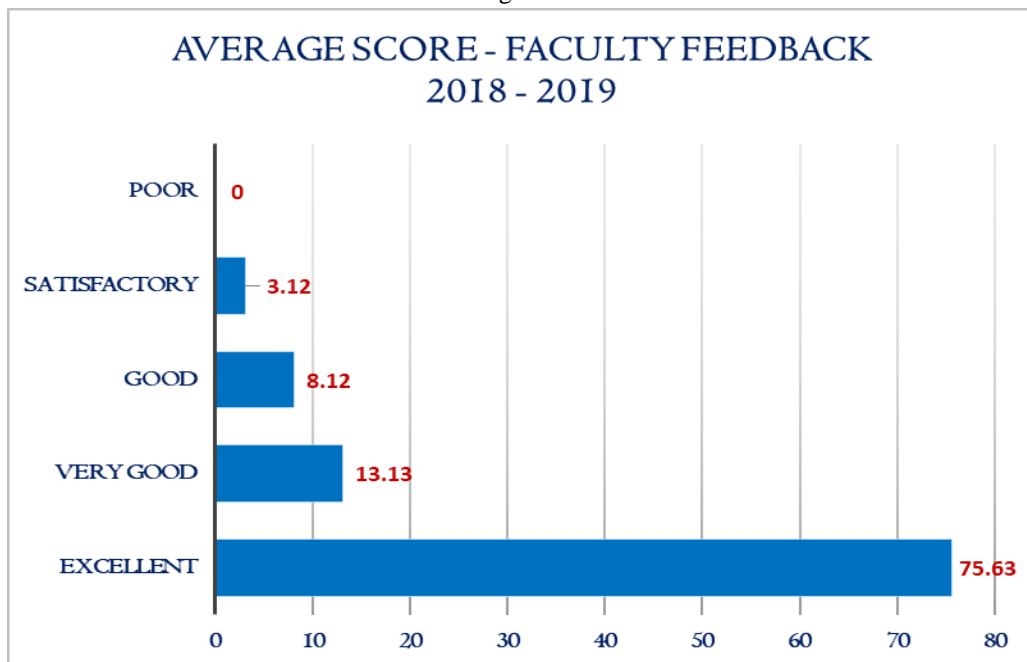


Figure 2

	DHANALAKSHMI SRINIVASAN COLLEGE OF ARTS AND SCIENCE FOR WOMEN (AUTONOMOUS) (Affiliated to Bharathidasan University, Tiruchirappalli) (Nationally Re-Accredited with 'A' Grade by NAAC) Perambalur – 621212	
NAAC	CRITERIA – I	METRIC 1.4.2

On an average 75.63% of them are Excellent, 13.13% are Very Good, 8.12% are Good and 3.12% are Satisfactory with the current prospectus of the programme and the same is represented in Figure 2.

Faculty Feedback Analysis Report

Faculty feedback for each semester's corresponding subject is tracked and analyzed. Below is a summary of the faculty comments from each programme.

- Faculty should be encouraged to publish journal articles or book chapters.
- Blended learning and flipped classroom techniques can be used to educate faculty.
- Co-curricular, extracurricular, certificate, diploma, and extension events can be held on any one of the week day.

Conclusion

A top-performing college should always prioritizes regular curriculum feedback, which is the IQAC's duty as well. Our college is able to implement corrective actions in the academic setting that enhance the curriculum design and offer top-tier education to everyone thanks to the feedback analysis from various stakeholders.




PRINCIPAL
 DHANALAKSHMI SRINIVASAN COLLEGE
 OF ARTS AND SCIENCE FOR WOMEN
 (AUTONOMOUS),
 PERAMBALUR - 621 212.

	DHANALAKSHMI SRINIVASAN COLLEGE OF ARTS AND SCIENCE FOR WOMEN (AUTONOMOUS) (Affiliated to Bharathidasan University, Tiruchirappalli) (Nationally Re-Accredited with 'A' Grade by NAAC) Perambalur – 621212	
NAAC	CRITERIA – I	METRIC 1.4.2

STUDENT FEEDBACK ANALYSIS REPORT – 2018 – 2019

To improve the quality of teaching and learning, we are in need of student feedback. The student responded feedback questionnaire is collected from various UG and PG programmes. Then all the responses were consolidated with their corresponding values is shown in Tables 1 to 4 and the same is represented graphically in Figures 1 to 8.

FACULTY & SUBJECT

S. NO	COMPONENT	EXCELLENT (%)	VERY GOOD (%)	GOOD (%)	SATISFACTORY (%)	POOR (%)
1	Does the teacher come prepared with the lesson?	70	15	10	5	0
2	Does the teacher present the lessons clearly and orderly?	70	10	10	10	0
3	Is the teacher capable of keeping the class under control?	73	12	10	5	0
4	Does the teacher generate interest in the subject?	68	12	10	10	0
5	Does the teacher help the students to clear doubts in / out of the class?	73	10	17	0	0
6	Is the teacher regular and punctual?	88	5	7	0	0
7	Does the teacher encourage the students for self-development?	70	10	10	10	0

	DHANALAKSHMI SRINIVASAN COLLEGE OF ARTS AND SCIENCE FOR WOMEN (AUTONOMOUS) (Affiliated to Bharathidasan University, Tiruchirappalli) (Nationally Re-Accredited with 'A' Grade by NAAC) Perambalur – 621212	
NAAC	CRITERIA – I	METRIC 1.4.2

8	Does the teacher remind you about your responsibility to the institution?	73	12	15	0	0
9	Does the teacher evaluate papers correctly?	80	10	5	5	0
10	Does the teacher use Blackboard / LCD / Projector effectively?	75	10	10	5	0
11	Do you have sufficient equipment's for successful completion of your practical?	83	12	5	0	0
12	Does the teacher help to clear the doubts?	80	10	5	5	0
13	Do you feel comfortable to work in the lab?	85	10	5	0	0
14	How do you feel about the class room facility in the college?	90	5	5	0	0
15	How do you feel about internal communications in the college?	85	10	5	0	0
Average Score		77.53	10.2	8.6	3.67	0

Table 1

	DHANALAKSHMI SRINIVASAN COLLEGE OF ARTS AND SCIENCE FOR WOMEN (AUTONOMOUS) (Affiliated to Bharathidasan University, Tiruchirappalli) (Nationally Re-Accredited with 'A' Grade by NAAC) Perambalur – 621212	
NAAC	CRITERIA – I	METRIC 1.4.2

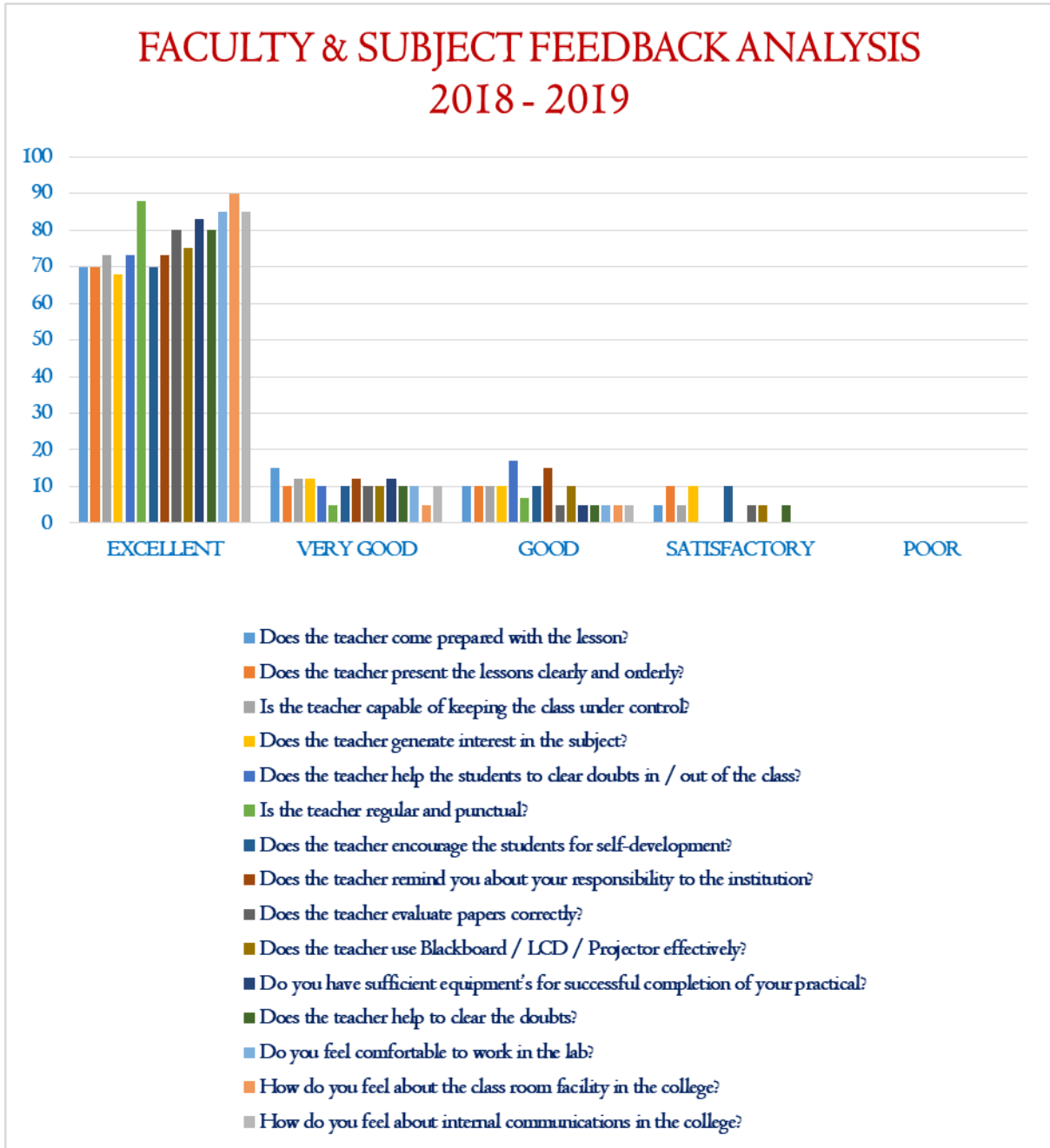


Figure 1

	DHANALAKSHMI SRINIVASAN COLLEGE OF ARTS AND SCIENCE FOR WOMEN (AUTONOMOUS) (Affiliated to Bharathidasan University, Tiruchirappalli) (Nationally Re-Accredited with 'A' Grade by NAAC) Perambalur – 621212	
NAAC	CRITERIA – I	METRIC 1.4.2

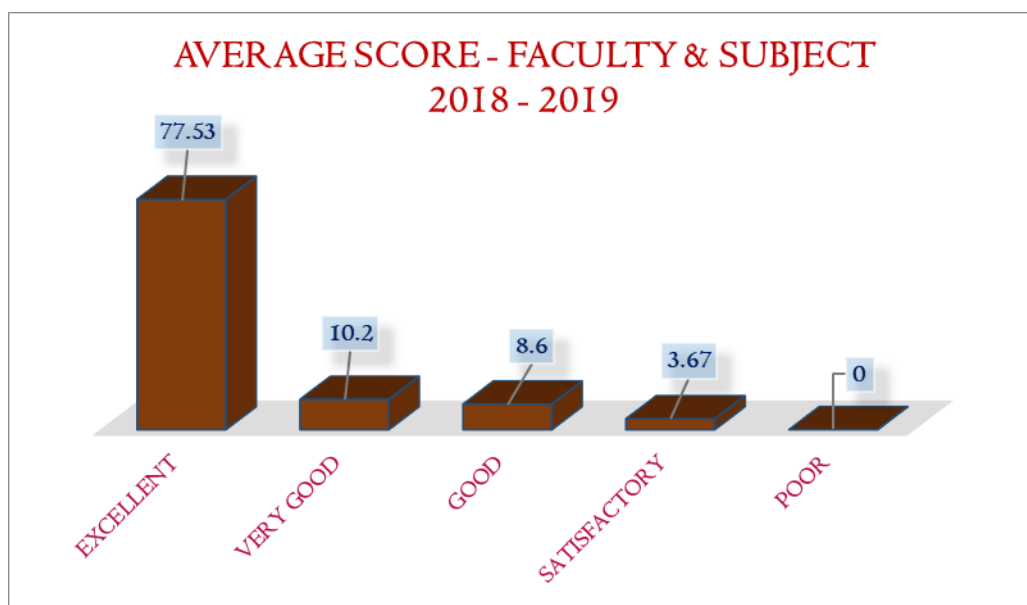


Figure 2

On an average 77.53% of them are Excellent, 10.2% are Very Good, 8.6% are Good and 3.67% are Satisfactory with the current faculty and curriculum of the programme and the same is represented in Figure 2.

LIBRARY

S. NO	COMPONENT	EXCELLENT (%)	VERY GOOD (%)	GOOD (%)	SATISFACTORY (%)	POOR (%)
1	Whether the required books are available in the library?	80	15	5	0	0
2	Whether the arrangements of the book in the library helpful?	80	10	10	0	0
3	Are you allowed to access the library books easily?	90	5	5	0	0
4	Whether library working hours is sufficient?	80	10	5	5	0
Average Score		82.5	10	6.25	1.25	0

Table 2

 <p>KNOWLEDGE IS POWER</p>	<p>DHANALAKSHMI SRINIVASAN COLLEGE OF ARTS AND SCIENCE FOR WOMEN (AUTONOMOUS) (Affiliated to Bharathidasan University, Tiruchirappalli) (Nationally Re-Accredited with 'A' Grade by NAAC) Perambalur – 621212</p>	
NAAC	CRITERIA – I	METRIC 1.4.2

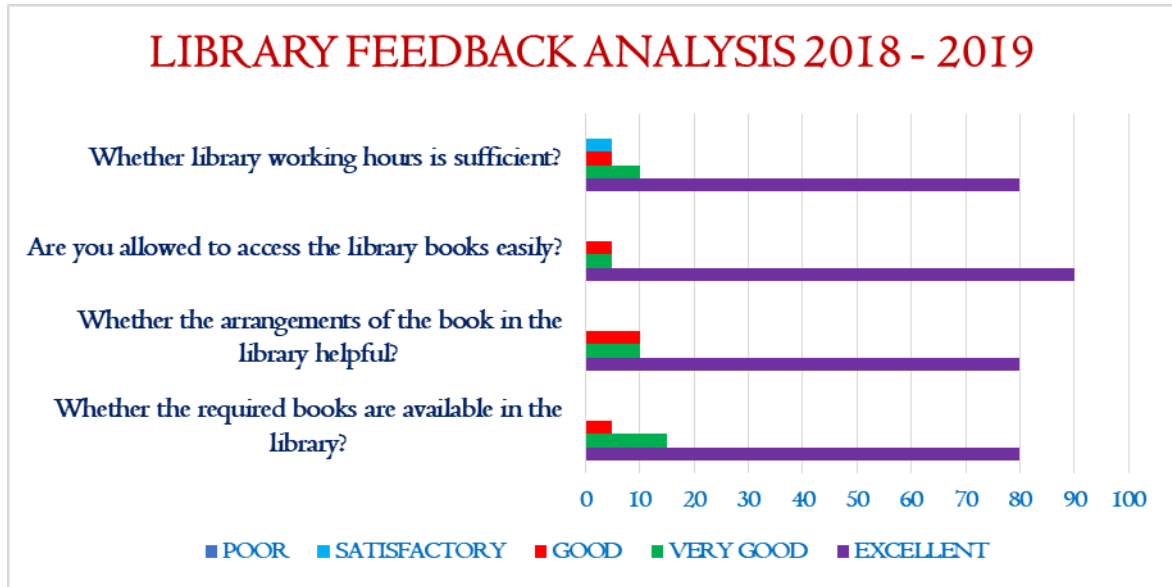


Figure 3

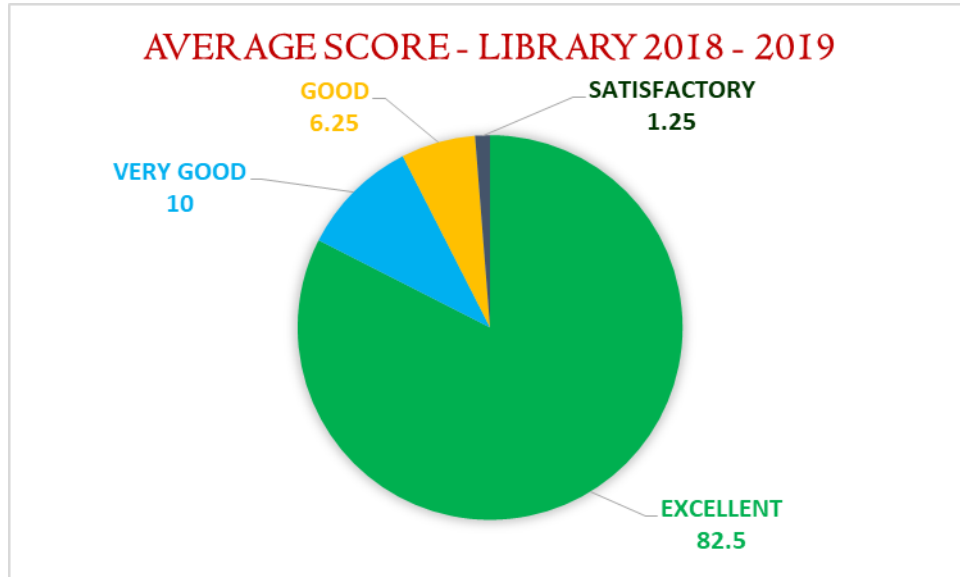


Figure 4

On an average 82.5% of them are Excellent, 10% are Very Good, 6.25% are Good and 1.25% are Satisfactory with the current competence of the library and the same is represented in Figure 4

	DHANALAKSHMI SRINIVASAN COLLEGE OF ARTS AND SCIENCE FOR WOMEN (AUTONOMOUS) (Affiliated to Bharathidasan University, Tiruchirappalli) (Nationally Re-Accredited with 'A' Grade by NAAC) Perambalur – 621212	
NAAC	CRITERIA – I	METRIC 1.4.2

EXTRA CURRICULAR

S. NO	COMPONENT	EXCELLENT (%)	VERY GOOD (%)	GOOD (%)	SATISFACTORY (%)	POOR (%)
1	How do you feel about the services of our office administration?	75	15	10	0	0
2	How do you feel about the physical education department services?	70	10	5	15	0
3	How do you feel about the extension and co-curricular activities?	80	10	10	0	0
4	How do you feel about the fine arts and cultural activities?	68	12	10	10	0
5	How do you feel about the services of HRDC?	70	10	10	10	0
Average Score		72.6	11.4	9	7	0

Table 3

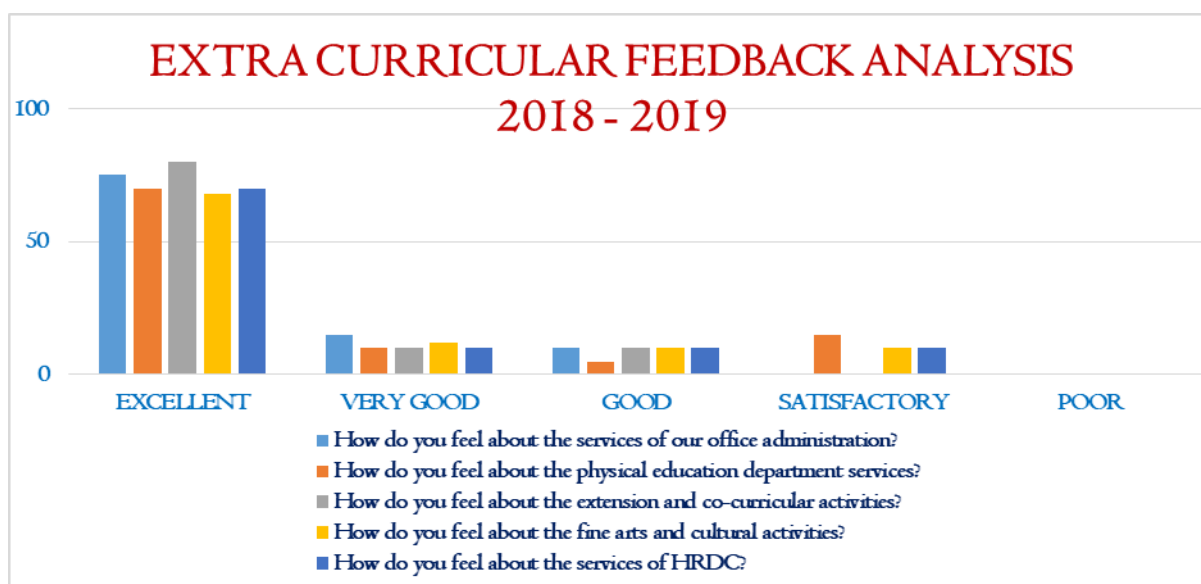


Figure 5

	DHANALAKSHMI SRINIVASAN COLLEGE OF ARTS AND SCIENCE FOR WOMEN (AUTONOMOUS) (Affiliated to Bharathidasan University, Tiruchirappalli) (Nationally Re-Accredited with 'A' Grade by NAAC) Perambalur – 621212	
NAAC	CRITERIA – I	METRIC 1.4.2

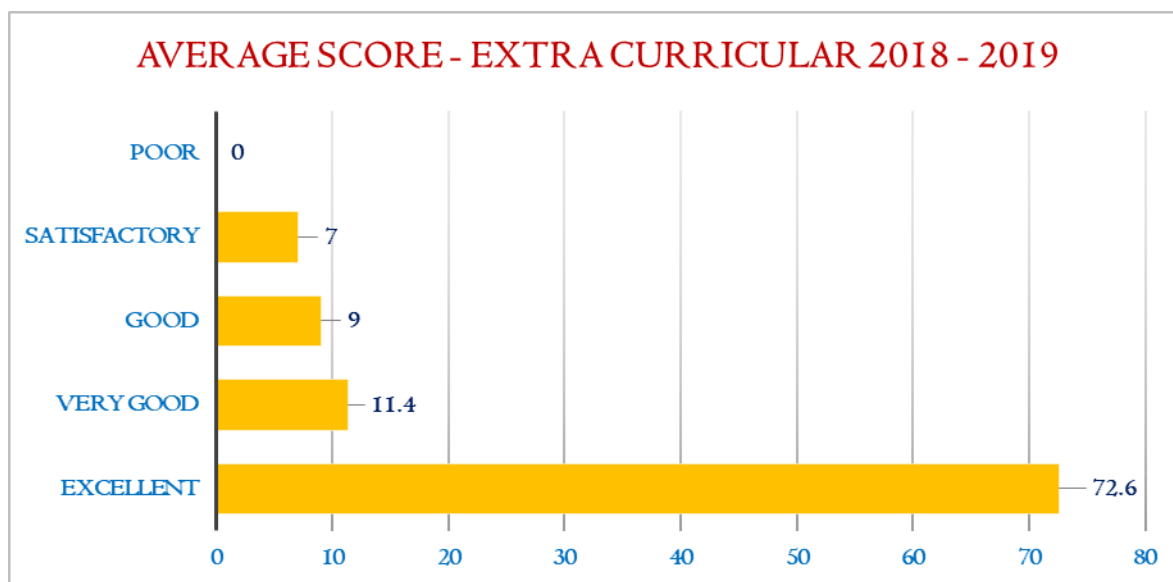


Figure 6

On an average 72.6% of them are Excellent, 11.4% are Very Good, 9% are Good and 7% are Satisfactory with the current extracurricular activities of the college and the same is represented in Figure 6.

HOSTEL & TRANSPORT

S. NO	COMPONENT	EXCELLENT (%)	VERY GOOD (%)	GOOD (%)	SATISFACTORY (%)	POOR (%)
1	Does the infrastructure of the hostel assure you a good living environment?	90	5	5	0	0
2	Is water facility adequate in your hostel?	85	5	10	0	0
3	Does your hostel mess provide you with hygienic, tasty and variety food on all days?	80	10	5	5	0
4	Does your hostel warden help you in making your stay in hostel comfortable?	88	12	0	0	0
5	Do you feel comfortable to	80	5	5	10	0

	DHANALAKSHMI SRINIVASAN COLLEGE OF ARTS AND SCIENCE FOR WOMEN (AUTONOMOUS) (Affiliated to Bharathidasan University, Tiruchirappalli) (Nationally Re-Accredited with 'A' Grade by NAAC) Perambalur – 621212	
NAAC	CRITERIA – I	METRIC 1.4.2

	travel in the college bus?					
6	Is the bus regular on all working days?	90	5	5	0	0
	Average Score	85.5	7	5	2.5	0

Table 4

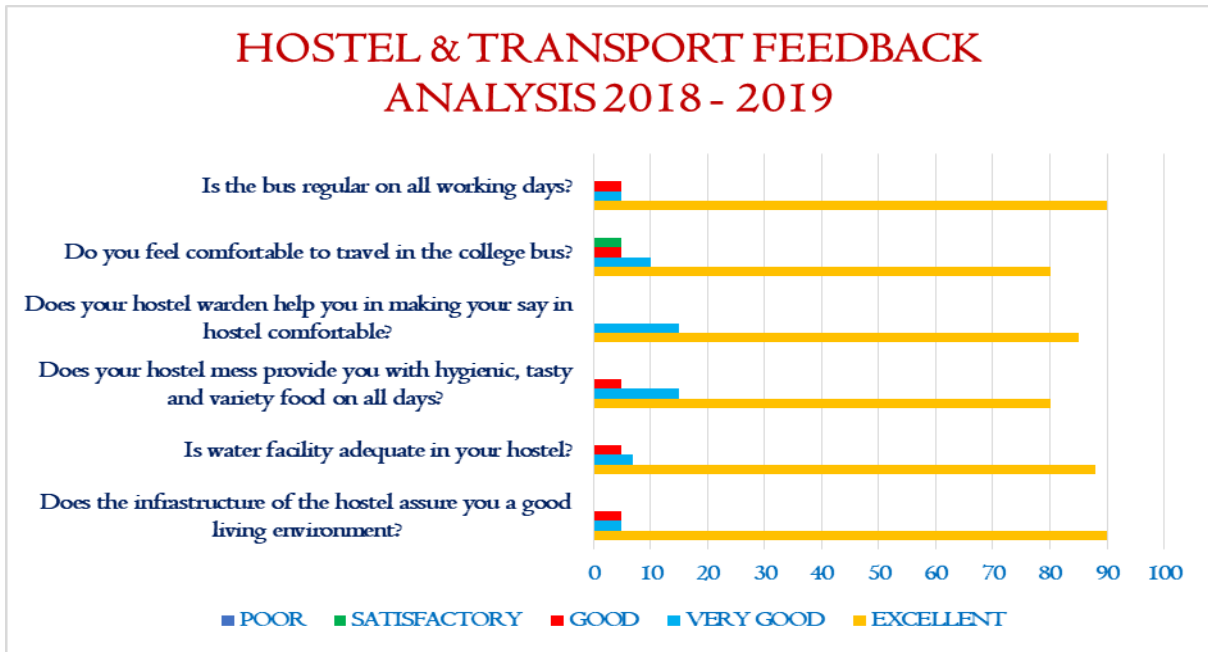


Figure 7

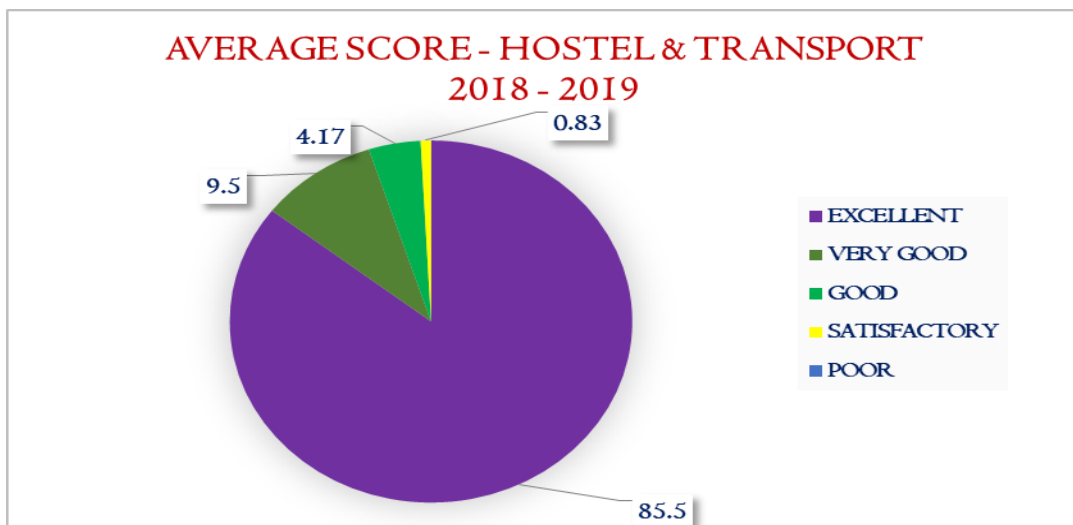


Figure 8

	DHANALAKSHMI SRINIVASAN COLLEGE OF ARTS AND SCIENCE FOR WOMEN (AUTONOMOUS) (Affiliated to Bharathidasan University, Tiruchirappalli) (Nationally Re-Accredited with 'A' Grade by NAAC) Perambalur – 621212	
NAAC	CRITERIA – I	METRIC 1.4.2

On an average 85.5% of them are Excellent, 9.5% are Very Good, 4.17% are Good and 0.83% are Satisfactory with the current ambience of Hostel and Transport and the same is represented in Figure 8.

Student Feedback Analysis Report

The following list contains the student recommendations from various departments.

- The assessment of a student's domain skills can be done using a variety of methodologies.
- Students who are interested in excelling in their particular domain can be offered value-added courses.
- It is possible to implement cutting-edge teaching methodologies and skill-based evaluations.
- There should be a connection between theory and application.

Conclusion

To improve performance even further, feedback is crucial for a top-performing college. Actions were made after the feedback from various stakeholders was analyzed. The college can achieve its vision with the aid of these operational measures.




PRINCIPAL
 DHANALAKSHMI SRINIVASAN COLLEGE
 OF ARTS AND SCIENCE FOR WOMEN
 (AUTONOMOUS),
 PERAMBALUR - 621 212.